

NACEP

TCU Summer Meeting

July 31, 2025

National Landscape



POPULAR

2.5M

2.5M students participate annually

Rapid growth in the past decade



PREVALENT

90%

90% of high schools offer

62%

62% of degree granting institutions



IMPACTFUL



Improved secondary and postsecondary outcomes

Improved outcomes for diverse student groups



About NACEP

NACEP is the first and only national organization supporting **programs, practitioners, and policy** to advance **quality** concurrent and dual enrollment programs.

Learn more about our work at [NACEP.org](https://www.nacep.org)

NACEP: Advancing Quality Dual Enrollment

PROGRAMS

- National Program Quality Standards
- Program Accreditation
- Technical Assistance and Support

PRACTITIONERS

- Events
- Professional Development
- Community
- Resources

POLICY

- Federal, State, System Level Policy
- Advocacy, advising and technical assistance (K12 and Higher Ed)

Dual Enrollment + NACEP = YOU

2.5M

Nearly 2.5 Million US High School students participated in Dual Enrollment in the 2022-2023 school year

NACEP Analysis of US Department of Education IPEDS Preliminary 12 Month Enrollment Survey AY22-23

NACEP National Footprint

52%

Of dual enrollment students nationally are in a program from a NACEP Member

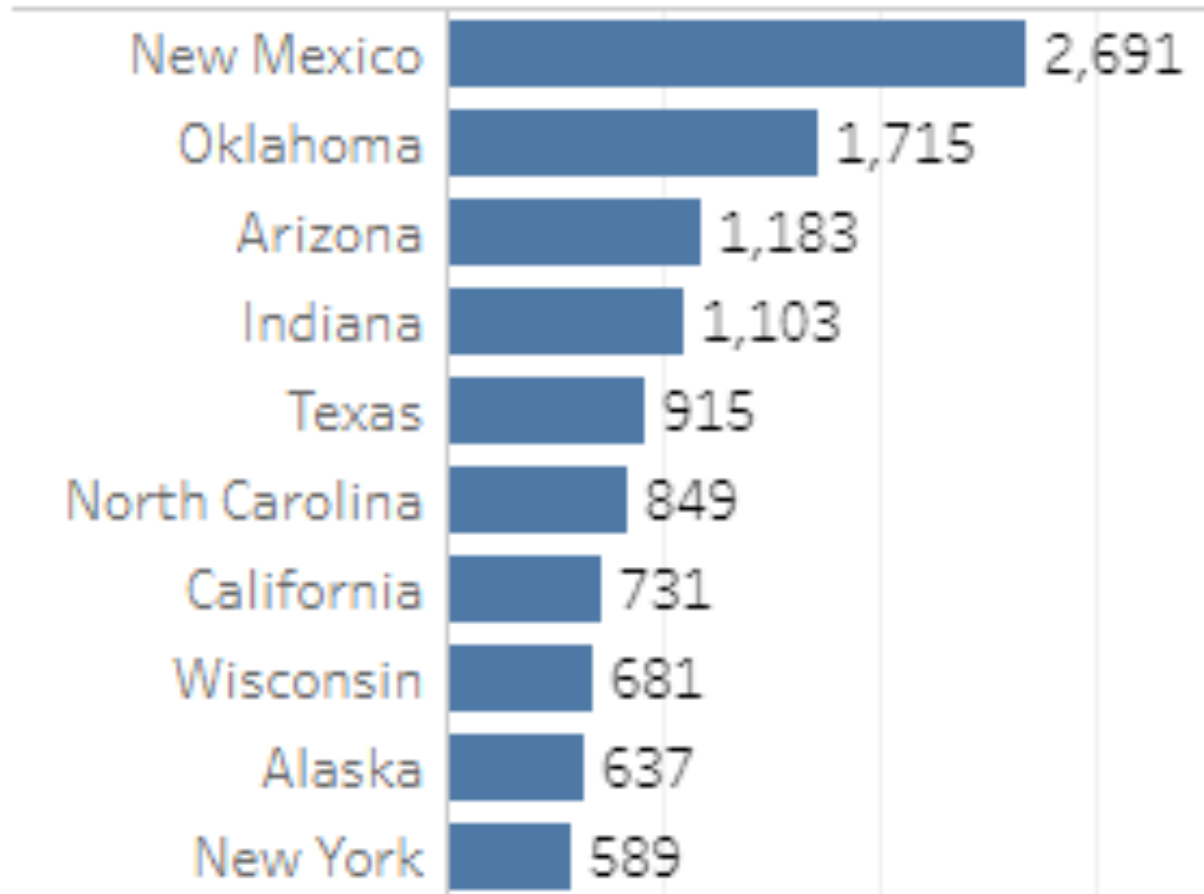
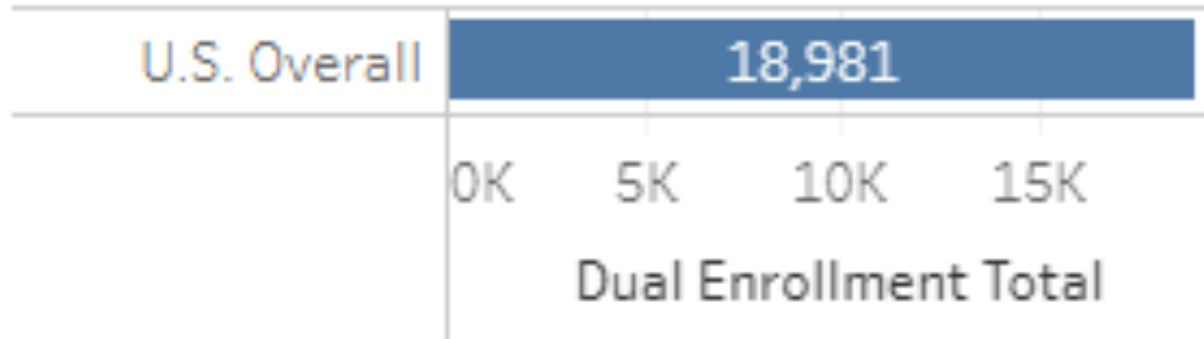
22%

Of dual enrollment students nationally are in a NACEP Accredited Program

IPEDS 2022/23: Overall By Gender and Ethnicity

- **White: 1,287,314**
 - Female - 56%
 - Male - 44%
- **Hispanic & Latino: 489,231**
 - Female – 59%
 - Male – 41%
- **Black /African American 196,144**
 - Female – 63%
 - Male – 37%

- **Native American/Alaska Native: 18,981**
 - Female - 56%
 - Male - 44%
- **Asian: 153,852**
 - Female – 54%
 - Male – 46%
- **Native Hawaiian/Pacific Islander: 5,038**
 - Female – 54%
 - Male – 46%



IPEDS: Percentage
of Enrollment of
**Native American/
Alaska Native DE
Students**

Dual Enrollment: Postsecondary Enrollment among Students in High School

IPEDS 12-Month College Enrollments, 2022-23

Provisional Release, August 2024

CCRC COMMUNITY COLLEGE RESEARCH CENTER
Teachers College, Columbia University

State

Minnesota

Sector

Community colleges

College

Fond du Lac Tribal and ...

1,282

Dual Enrollment (DE) Students in Minnesota (Sector: All)

63%

of Undergraduate (UG) Enrollment in Minnesota (Sector: All)

More Dashboards:

State-by-State

By College

Race/Ethnicity (click to highlight)

American India... Hispanic or Lat... Two or more ra...
Asian Native Hawaiia... U.S. Nonresident
Black or Africa... Race/ethnicity ... White

Gender

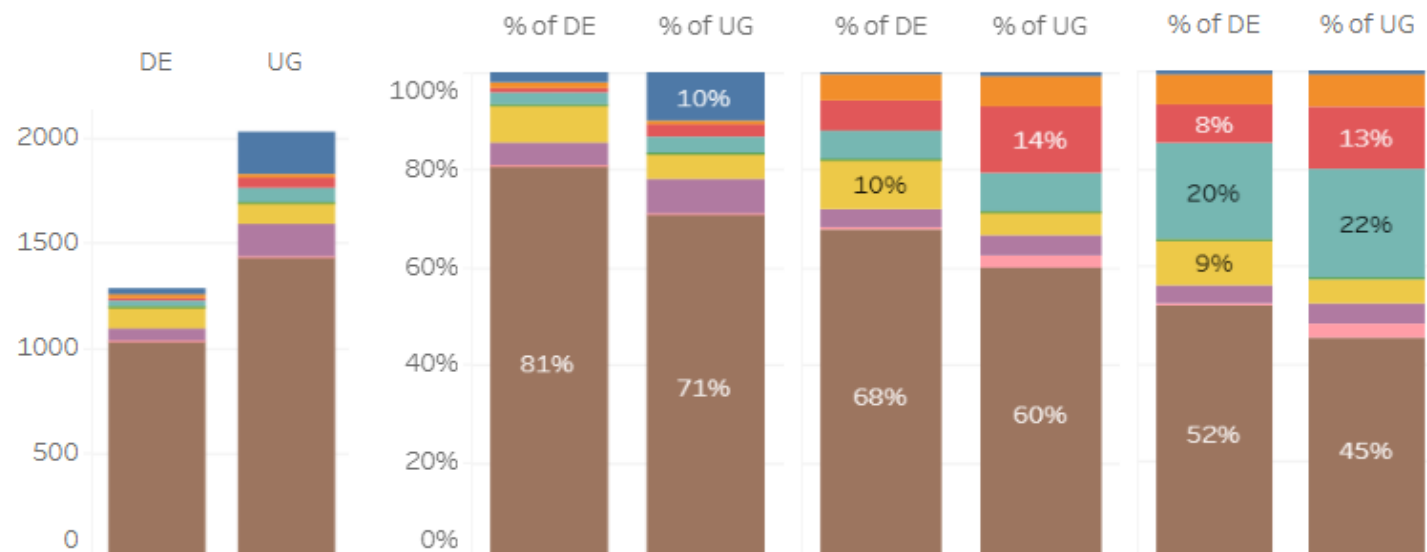
Men
Women

MN College: Fond du Lac Tribal and Community College

MN College: Fond du Lac Tribal and Community College

Minnesota All

U.S. Overall All



- 1282 DE students
- 63% of Undergraduate Enrollment in MN Community Colleges

Dual Enrollment: Postsecondary Enrollment among Students in High School

IPEDS 12-Month College Enrollments, 2022-23

Provisional Release, August 2024

CCRC COMMUNITY COLLEGE RESEARCH CENTER
Teachers College, Columbia University

State
Montana

Sector
Public four-years

College
Salish Kootenai College

39
Dual Enrollment (DE) Students in
Montana (Sector: All)

5%
of Undergraduate (UG)
Enrollment in Montana
(Sector: All)

More Dashboards:

State-by-State

By College

Race/Ethnicity (click to highlight)

American India... Hispanic or Lat... Two or more ra...
Asian Native Hawaiia... U.S. Nonresident
Black or Africa... Race/ethnicity ... White

Gender

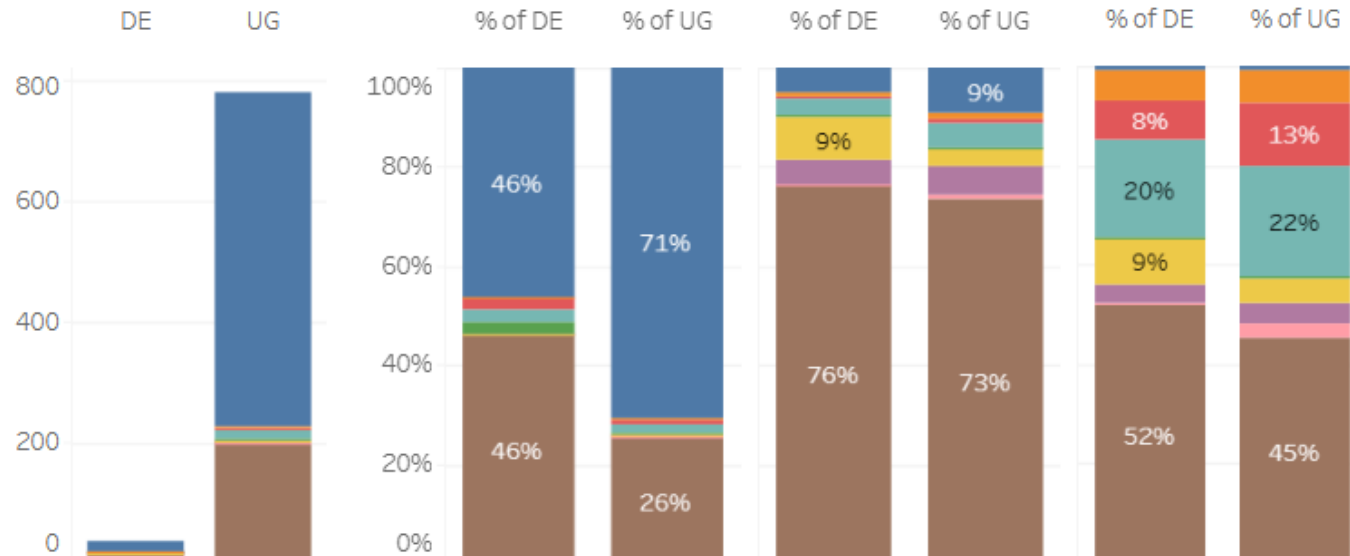
Men
Women

MT College: Salish
Kootenai College

MT College: Salish Kootenai
College

Montana
All

U.S. Overall
All



**SALISH KOOTENAI
COLLEGE**

- 39 DE students
- 5% of Undergraduate Enrollment in MT Community Colleges

Staffing

Preliminary findings: NACEP 2024 Salary & Staffing Survey

59%



Centralized Program Staffing Model

Centralized (Dedicated staff focus exclusively on DE/CE program operations)

32%

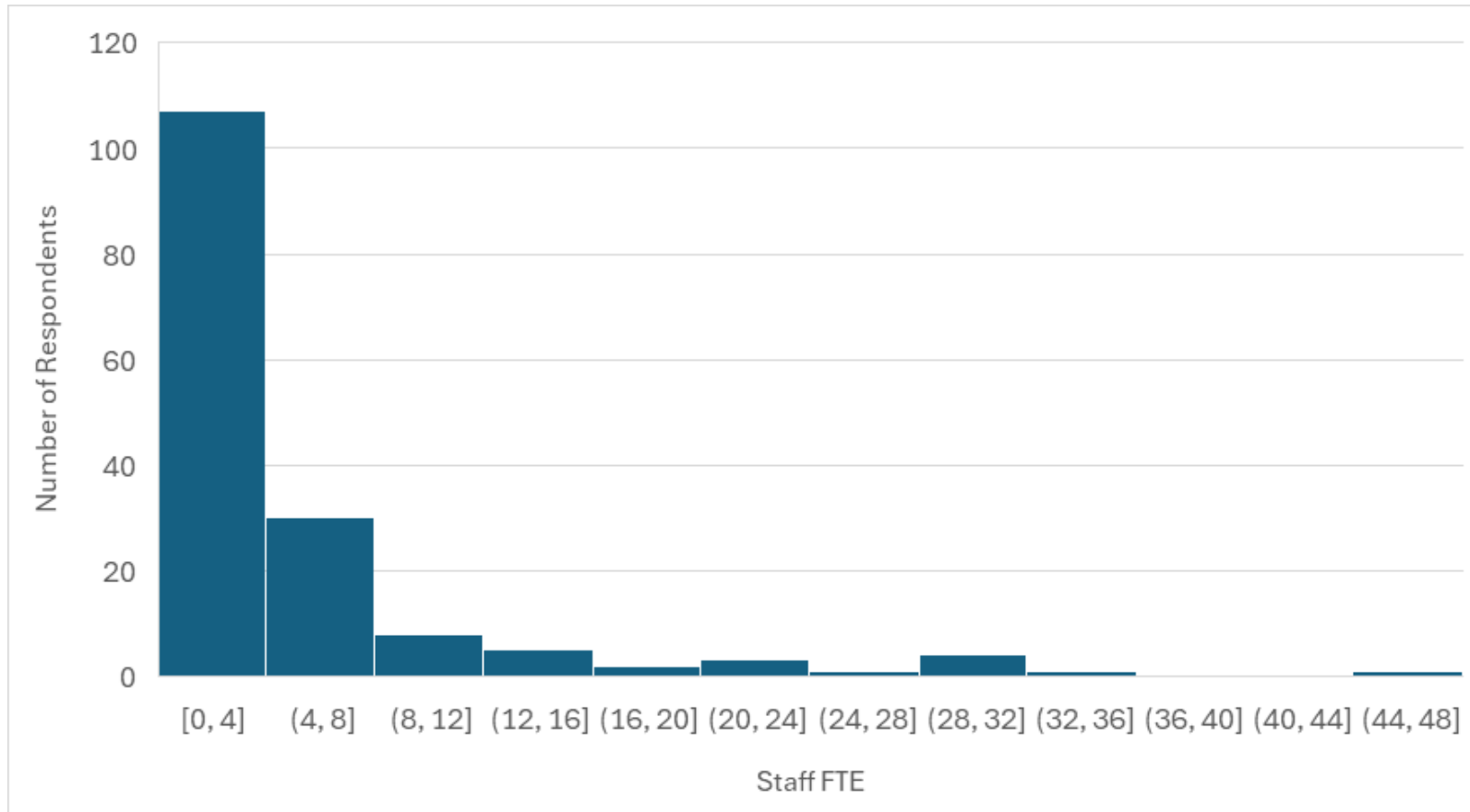


Distributed Program Staffing Model

Distributed (Responsibilities are shared across existing institutional departments)

Regardless of program size as measured by student FTE, programs report being understaffed

- 19% of DE/CE programs have 1 or fewer staff members.
- 42% of DE/CE programs have 2 or fewer staff members.
- 55% of DE/CE programs have 3 or fewer staff members.
- 74% of DE/CE programs have 5 or fewer staff members.





NACEP RESOURCE CENTER

[ABOUT >](#)[ACCREDITATION >](#)[RESOURCES >](#)[PRESS ROOM >](#)[EVENTS >](#)[MEMBERSHIP >](#)

Resource Center

Explore our resource library for expert insights in dual and concurrent enrollment. Consider becoming a NACEP member to access exclusive member-only content. Use the membership tab above to learn more and join today.

[All Topics](#)[All Content Types](#)[All Audiences](#)

Join us for 2025 National Conference!



*Thank
you!*



Amy Williams
awilliams@nacep.org

Dianne Lassai Barker
dbarker@nacep.org